

Physical room characteristics & space limitations in bathrooms vary. These specs are for planning purposes; if you need additional information not listed here please contact customer service via our website.

Measurement	21 x 21	24 x 18	24 x 21	27 x 21	30 x 18	30 x 21	30 x 18 DR	30 x 18 DL	30 x 21 DR	30 x 21 DL	36 x 18 DR	36 x 18 DL	36 x 18 DRL	36 x 21 DR	36 x 21 DL	36 x 21 DRL	42 x 21 DRL	48 x 18 DRL	48 x 21 DRL	54 x 21 DRL	60 x 21 DRL	60 x 21 DC	66 x 21 DRL	66 x 21 DC	72 x 21 DRL	72 x 21 DC				
	Top drawer tilt-out trays are standard. See sell sheets for more info																													
A	21	24	24	27	30	30	30	30	30	30	36	36	36	36	36	36	42	48	48	54	60	60	66	66	72	72				
B	21 ¹ / ₂	18 ¹ / ₂	21 ¹ / ₂	21 ¹ / ₂	18 ¹ / ₂	21 ¹ / ₂	18 ¹ / ₂	18 ¹ / ₂	21 ¹ / ₂	21 ¹ / ₂	18 ¹ / ₂	18 ¹ / ₂	18 ¹ / ₂	21 ¹ / ₂	21 ¹ / ₂	21 ¹ / ₂	21 ¹ / ₂	18 ¹ / ₂	21 ¹ / ₂	21 ¹ / ₂	21 ¹ / ₂	21 ¹ / ₂	21 ¹ / ₂	21 ¹ / ₂	21 ¹ / ₂	21 ¹ / ₂				
C	31	31	31	31	31	31	31	31	31	31	31	31	31	31	31	31	31	31	31	31	31	31	31	31	31	31				
D	18 ¹ / ₂	15 ¹ / ₂	18 ¹ / ₂	18 ¹ / ₂	15 ¹ / ₂	18 ¹ / ₂	15 ¹ / ₂	15 ¹ / ₂	18 ¹ / ₂	18 ¹ / ₂	15 ¹ / ₂	15 ¹ / ₂	15 ¹ / ₂	18 ¹ / ₂	18 ¹ / ₂	18 ¹ / ₂	18 ¹ / ₂	15 ¹ / ₂	18 ¹ / ₂	18 ¹ / ₂	18 ¹ / ₂	18 ¹ / ₂	18 ¹ / ₂	18 ¹ / ₂	18 ¹ / ₂	18 ¹ / ₂				
E	5	5	5	5	5	5	5	5	5	5	5	5	5	5	5	5	5	5	5	5	5	5	5	5	5	5				
F	2 ¹ / ₂	2 ¹ / ₂	2 ¹ / ₂	2 ¹ / ₂	2 ¹ / ₂	2 ¹ / ₂	2 ¹ / ₂	2 ¹ / ₂	2 ¹ / ₂	2 ¹ / ₂	2 ¹ / ₂	2 ¹ / ₂	2 ¹ / ₂	2 ¹ / ₂	2 ¹ / ₂	2 ¹ / ₂	2 ¹ / ₂	2 ¹ / ₂	2 ¹ / ₂	2 ¹ / ₂	2 ¹ / ₂	2 ¹ / ₂	2 ¹ / ₂	2 ¹ / ₂	2 ¹ / ₂	2 ¹ / ₂				
G	26	26	26	26	26	26	26	26	26	26	26	26	26	26	26	26	26	26	26	26	26	26	26	26	26	26				
H	11 ¹ / ₂	11 ¹ / ₂	11 ¹ / ₂	11 ¹ / ₂	11 ¹ / ₂	11 ¹ / ₂	11 ¹ / ₂	11 ¹ / ₂	11 ¹ / ₂	11 ¹ / ₂	11 ¹ / ₂	11 ¹ / ₂	11 ¹ / ₂	11 ¹ / ₂	11 ¹ / ₂	11 ¹ / ₂	11 ¹ / ₂	11 ¹ / ₂	11 ¹ / ₂	11 ¹ / ₂	11 ¹ / ₂	11 ¹ / ₂	11 ¹ / ₂	11 ¹ / ₂	11 ¹ / ₂					
I	16 ¹ / ₂	16 ¹ / ₂	16 ¹ / ₂	16 ¹ / ₂	16 ¹ / ₂	16 ¹ / ₂	16 ¹ / ₂	16 ¹ / ₂	16 ¹ / ₂	16 ¹ / ₂	16 ¹ / ₂	16 ¹ / ₂	16 ¹ / ₂	16 ¹ / ₂	16 ¹ / ₂	16 ¹ / ₂	16 ¹ / ₂	16 ¹ / ₂	16 ¹ / ₂	16 ¹ / ₂	16 ¹ / ₂	16 ¹ / ₂	16 ¹ / ₂	16 ¹ / ₂	14 ¹ / ₂	14 ¹ / ₂				
J	19 ¹ / ₂	22 ¹ / ₂	22 ¹ / ₂	25 ¹ / ₂	28 ¹ / ₂	28 ¹ / ₂	18 ¹ / ₂	18 ¹ / ₂	18 ¹ / ₂	18 ¹ / ₂	24 ¹ / ₂	24 ¹ / ₂	14 ¹ / ₂	24 ¹ / ₂	24 ¹ / ₂	14 ¹ / ₂	20 ¹ / ₂	26 ¹ / ₂	26 ¹ / ₂	26 ¹ / ₂	26 ¹ / ₂	24 ¹ / ₂	26 ¹ / ₂	24 ¹ / ₂	32 ¹ / ₂	26 ¹ / ₂				
K	—	—	—	—	—	—	10 ¹ / ₂	10 ¹ / ₂	10 ¹ / ₂	10 ¹ / ₂	10 ¹ / ₂	10 ¹ / ₂	10 ¹ / ₂	10 ¹ / ₂	10 ¹ / ₂	10 ¹ / ₂	10 ¹ / ₂	10 ¹ / ₂	10 ¹ / ₂	13 ¹ / ₂	16 ¹ / ₂	9 ¹ / ₂	19 ¹ / ₂	15 ¹ / ₂	19 ¹ / ₂	17 ¹ / ₂				
L	17 ¹ / ₂	20 ¹ / ₂	20 ¹ / ₂	23 ¹ / ₂	26 ¹ / ₂	26 ¹ / ₂	26 ¹ / ₂	26 ¹ / ₂	26 ¹ / ₂	26 ¹ / ₂	32 ¹ / ₂	32 ¹ / ₂	32 ¹ / ₂	32 ¹ / ₂	32 ¹ / ₂	32 ¹ / ₂	17	23	23	23	23	21 ¹ / ₂	23	21 ¹ / ₂	29	23 ¹ / ₂				

For TALL 33³/₄" vanities, refer to the following dimensions:

C = 33³/₄" **G** = 28¹/₂" **H** = 13¹/₂" **I** = 17¹/₂" (72" vanities **I** = 15¹/₂")

For Furniture Style Vanities, refer to the following dimensions:

C = 34¹/₂" (total height with leg base) **G** = 28¹/₂" **H** = 8" **I** = 17¹/₂" (72" vanities **I** = 15¹/₂")

For PREMIERE vanities, refer to TALL 33³/₄" vanities AND the following dimensions:

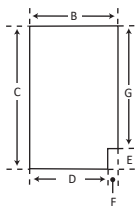
J	19 ¹ / ₂	22 ¹ / ₂	22 ¹ / ₂	25 ¹ / ₂	28 ¹ / ₂	28 ¹ / ₂	18 ¹ / ₂	18 ¹ / ₂	18 ¹ / ₂	18 ¹ / ₂	24 ¹ / ₂	24 ¹ / ₂	14 ¹ / ₂	24 ¹ / ₂	24 ¹ / ₂	24 ¹ / ₂	19 ¹ / ₂	26 ¹ / ₂	25 ¹ / ₂	25 ¹ / ₂	25 ¹ / ₂	24 ¹ / ₂	25 ¹ / ₂	24 ¹ / ₂	31 ¹ / ₂	26
K	—	—	—	—	—	—	10 ¹ / ₂	10 ¹ / ₂	10 ¹ / ₂	10 ¹ / ₂	10 ¹ / ₂	10 ¹ / ₂	10 ¹ / ₂	10 ¹ / ₂	10 ¹ / ₂	10 ¹ / ₂	10 ¹ / ₂	10 ¹ / ₂	10 ¹ / ₂	13 ¹ / ₂	16 ¹ / ₂	10 ¹ / ₂	19 ¹ / ₂	16 ¹ / ₂	19 ¹ / ₂	19
L	17 ¹ / ₂	20 ¹ / ₂	20 ¹ / ₂	23 ¹ / ₂	26 ¹ / ₂	26 ¹ / ₂	26 ¹ / ₂	26 ¹ / ₂	26 ¹ / ₂	26 ¹ / ₂	32 ¹ / ₂	32 ¹ / ₂	32 ¹ / ₂	32 ¹ / ₂	32 ¹ / ₂	32 ¹ / ₂	17 ¹ / ₂	23	23 ¹ / ₂	23 ¹ / ₂	23 ¹ / ₂	22	23 ¹ / ₂	22	29 ¹ / ₂	23 ¹ / ₂

KEY:
(INCHES)

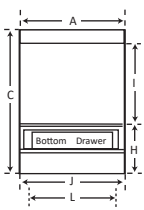
A = Overall Vanity Width (left to right)
B = Overall Vanity Depth (front to back)
C = Overall Vanity Height
D = Footprint Depth (back to toe-kick)

E = Toe Kick Height
F = Toe Kick Inset/depth
G = Face Frame Height
H = Floor to Bottom Deck Shelf

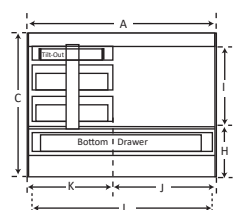
I = Vertical Height Clearance in Back of Cabinet (Bottom Deck Shelf to Back Brace)
J = Horizontal Width Clearance between Drawers and/or Cabinet Side Panels
K = Drawer System Width (drawer boxes, drawer slides, & supports)
L = Bottom Drawer Width (drawer box over-all width)



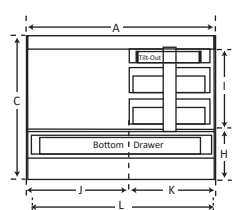
Side View



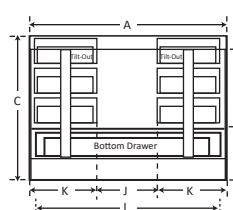
1 Bottom Drawer



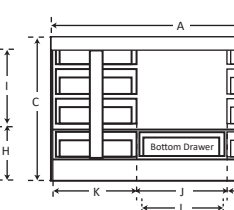
Drawers Right
(back view of cabinet)



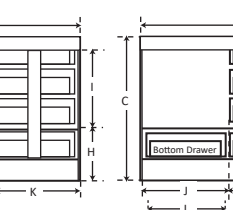
Drawers Left
(back view of cabinet)



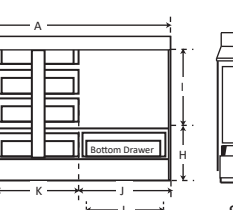
Drawers Left & Right
36" Wide Vanities



Drawers Left and Right
42" thru 72" wide vanities



Drawers Center
60" thru 72" Wide Vanities



Tilt-Out Trays are constructed of durable ABS plastic for removal and cleaning.

Size: 6¹/₄" wide 3" high 2³/₈" deep

Drawer Info: See SPEC-1 & SPEC-3