

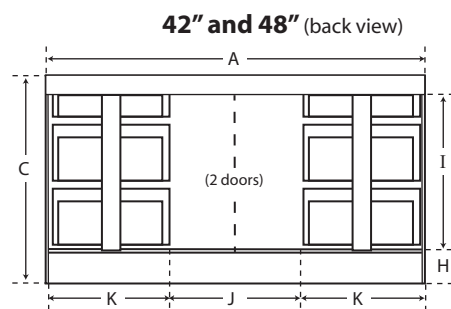
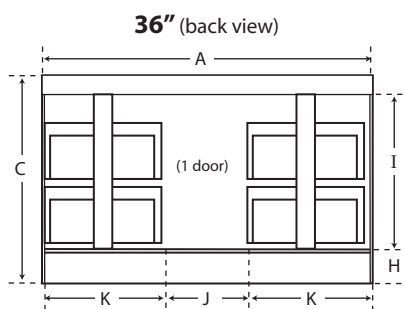
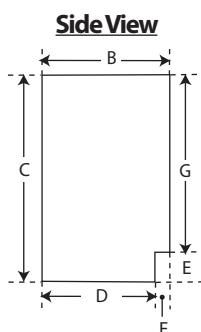


Specifications

Eureka Vanity

Physical room characteristics & space limitations in bathrooms vary. These specs are for planning purposes; if you need additional information not listed here please contact customer service via our website.

Measurement	<u>36 x 21</u> 1 Door 2 Drawers Right 2 Drawers Left	<u>42 x 21</u> 2 Doors 3 Drawers Right 3 Drawers Left	<u>48 x 21</u> 2 Doors 3 Drawers Right 3 Drawers Left	KEY (in inches)
A	36	42	48	A = Overall Vanity Width (left to right)
B		21 ¹ / ₈		B = Overall Vanity Depth (front to back)
C		33 ³ / ₄		C = Overall Vanity Height (top to bottom)
D		18 ¹ / ₂		D = Footprint Depth (back of vanity to toe kick)
E		5		E = Toe-Kick Height
F		2 ⁵ / ₈		F = Toe-Kick Inset (depth)
G		28 ³ / ₄		G = Face Frame Height (cab. height minus toe kick)
H		5 ³ / ₄		H = Floor to Bottom Deck Shelf
I		25		I = Vertical Height Opening Clearance (back of cab., between deck & wall brace)
J	Tall = 14 ¹ / ₄ Prem = 13 ³ / ₄	Tall = 20 ¹ / ₄ Prem = 19 ³ / ₄	Tall = 26 ¹ / ₄ Prem = 25 ³ / ₄	J = Horizontal Width Opening Clearance (back of cab., btwn drawers &/or sides)
K	Tall = 10 ¹ / ₄ Prem = 10 ¹ / ₂			K = Drawer System Width (boxes, slides, & supports)

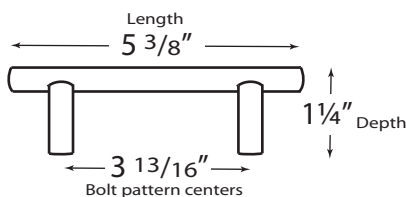


EUREKA is available in **TALL** or **PREMIERE**

Both include 3/4" thick drawer fronts & 1/2" thick, English "dove-tailed" drawer boxes.

TALL versions include 9-ply baltic birch, edge-banded sides with enamel coated, side-mounted slides.

PREMIERE drawers are solid beechwood with undermount, full extension, soft-close slides.



	TALL Drawer Boxes (inside dimensions W x D x H)	PREMIERE Drawer Boxes (inside dimensions W x D x H)
42" & 48" 2 Top Drawers		
36" All 4 Drawers		
42" & 48" 4 Bottom Drawers		