



Specifications

Bathroom Solutions

31" & 33¾" (Tall & PREM)

Physical room characteristics in bathrooms vary. These specs are for planning purposes; if you need additional info. not listed here please contact customer service via our website.

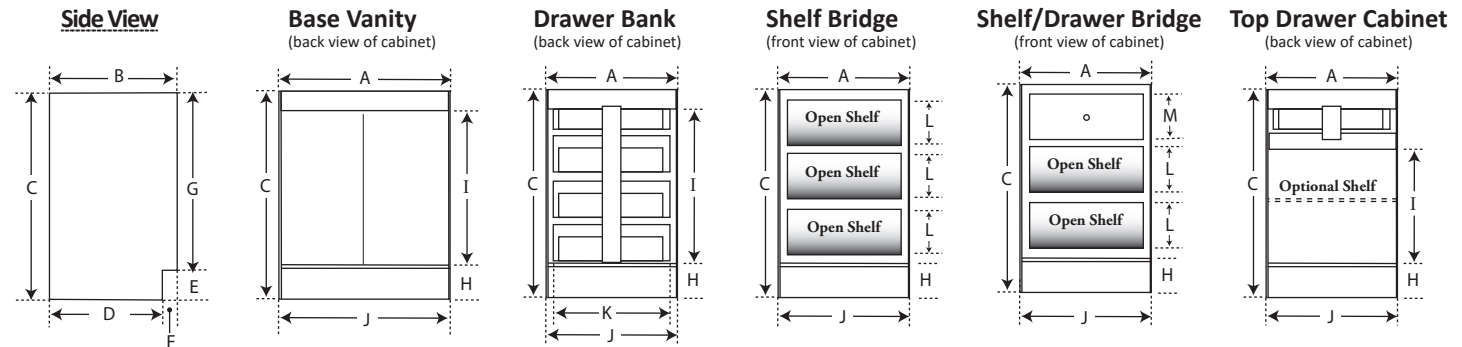
Measurement	Base Vanities (2 Doors)				Drawer Banks (4 drawers)					Shelf Bridge 3			Shelf Drawer Bridge Combo			Top Drawer Cabinet	Suspended Drawer Unit (SDU)	
	21 x 21	24 x 21	27 x 21	30 x 21	12 x 21	15 x 21	18 x 21	21 x 21	24 x 21	12 x 21	15 x 21	18 x 21	12 x 21	15 x 21	18 x 21	19 x 21	24 x 21	30 x 21 (Premiere N/A)
A	21	24	27	30	12	15	18	21	24	12	15	18	12	15	18	19	24	30
B	21				21					21			21			21	21	
C	31				31					31			31			31	6¾	
D	18½				18½					18½			18½			18½	-	-
E	5				5					5			5			5	-	-
F	2⅝				2⅝					2⅝			2⅝			2⅝	-	-
G	26				26					26			26			26	-	-
H	5¾				5¾					-			-			5¾	-	-
I	22¼				22¼					-			-			22¼	-	-
J	20	23	26	29	11	14	17	20	23	11	14	17	11	14	17	18	-	-
K	-	-	-	-	10¾	13¾	16¾	19¾	22¾	-	-	-	-	-	-	-	-	-
L	-				-					9¼ x 6	12¼ x 6	15¼ x 6	9¼ x 8	12¼ x 8	15¼ x 8	-	-	-
M	-				-					-	-	-	See SPEC 1			-	-	-

For TALL/PREM 33¾" height cabinets, refer to the following dimensions:

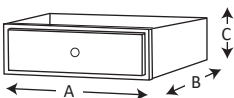
C	33¾	33¾	33¾	33¾	33¾	7⅞					
G	28¾	28¾	28¾	28¾	28¾	-					
I	25	25	-	-	25	-					
L	-	-	9¼ x 7 ⁵ / ₁₆	12¼ x 7 ⁵ / ₁₆	15¼ x 7 ⁵ / ₁₆	9¼ x 8 ³ / ₁₆	12¼ x 8 ³ / ₁₆	15¼ x 8 ³ / ₁₆	-	-	-
M	-	-	-	-	-	See SPEC-3			-	-	-

KEY (in inches):

- A = Overall Vanity Width (left to right)
- B = Overall Vanity Depth (front to back)
- C = Overall Vanity Height (top to bottom)
- D = Footprint Depth (back of vanity to toe kick)
- E = Toe-Kick Height
- F = Toe-Kick Inset (depth)
- G = Face Frame Height (cabinet height minus the toe kick)
- H = Floor to Bottom Deck Shelf
- I = Vertical height Clearance in back of cabinet (bottom deck shelf to back brace)
- J = Horizontal Width Clearance (between side panels)
- K = Drawer System Width (boxes, slides, and supports)
- L = Open Shelf WxH (three openings on Shelf Bridge3 / two on Shelf Drwr bridge combo)
- M = Drawer Size (For top drawer of the Shelf/Drawer Bridge Combo)



Suspended Drawer Unit



- See **NOTE** on bottom of respective "White Thermofoil" price sheets regarding reveals.
- See **SPEC pages 9-10** for related product.
- See **INFO-2** for installation suggestions.

