



Specifications

Malibu Vanity

Wall Mounted

Physical room characteristics in bathrooms vary. These specs are for planning purposes; If you need additional information not listed here please contact customer service via our website.

Measurement	30 x 18 2 Drawers 1 Top, and 1 Bottom	36 x 18 1 Door 2 Drawers Right 2 Drawers Left	42 x 18 2 Doors 3 Drawers Right 3 Drawers Left	48 x 18 2 Doors 3 Drawers Right 3 Drawers Left
A	30	36	42	48
B	18 $\frac{3}{8}$			
C	21 $\frac{3}{4}$			
D	4 $\frac{1}{2}$			
E	15 $\frac{3}{8}$			
F	10 $\frac{1}{2}$			
G	7 $\frac{3}{4}$	13 $\frac{3}{4}$	19 $\frac{3}{4}$	25 $\frac{3}{4}$
H	7 $\frac{1}{2}$ x 13 $\frac{3}{8}$ x 3 $\frac{3}{8}$		-	-
I	7 $\frac{1}{2}$ x 13 $\frac{3}{8}$ x 6 $\frac{3}{8}$		-	-
J	-	-	7 $\frac{1}{2}$ x 13 $\frac{3}{8}$ x 3 $\frac{3}{8}$	
K	5 $\frac{3}{8}$			
L	1 $\frac{1}{4}$			
M	3 $\frac{13}{16}$			

KEY (in inches):

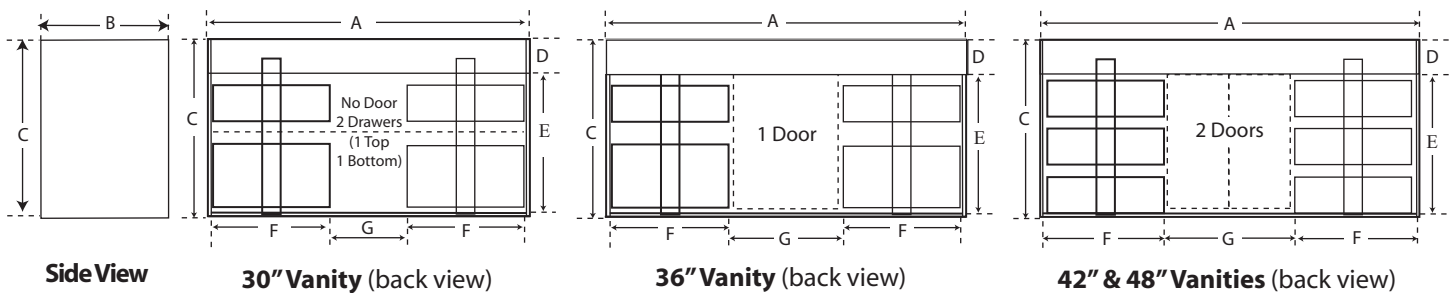
- A = Overall Vanity Width (left to right)
- B = Overall Vanity Depth (front to back)
- C = Overall Vanity Height (top to bottom)
- D = Back Brace Height (mounting bracket)
- E = Height Opening Clearance (between deck & back brace)
- F = Drawer System Width (boxes, slides, and supports)
- G = Width Opening Clearance (between drawers)

DRAWER BOXES (inside dimensions W x D x H)

- H = 30" & 36" Top Drawer
- I = 30" & 36" Bottom Drawer
- J = 42" & 48" All Drawers

HARDWARE (Door/Drawer Pull)

- K = Overall Length
- L = Overall Depth
- M = Bolt Pattern (centerline to centerline)



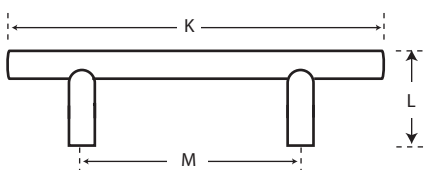
Side View

30" Vanity (back view)

36" Vanity (back view)

42" & 48" Vanities (back view)

Drawer/Door Pulls



MALIBU is available with **PREMIERE** soft-close doors and drawers. Drawers boxes are constructed in 1/2" solid beechwood and include English dove-tail joints with undermount, full-extension slides.

